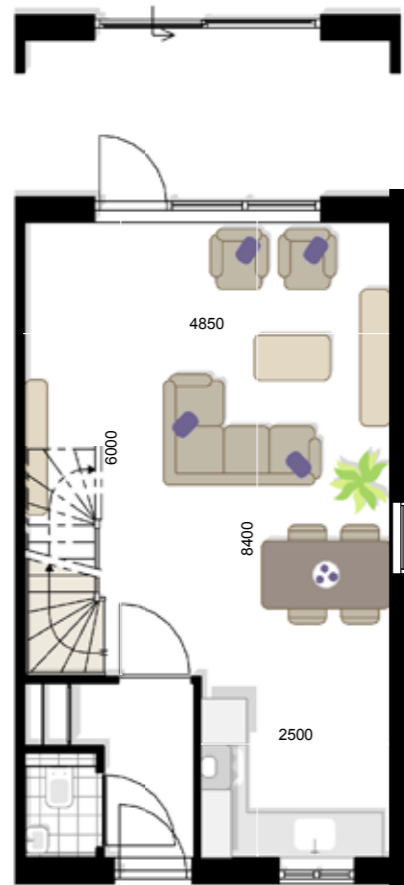
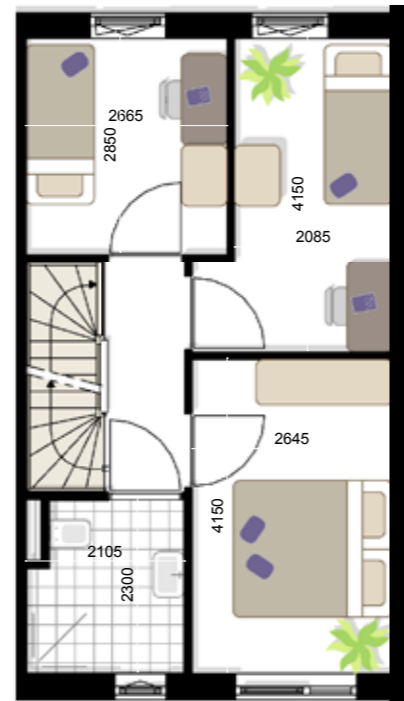


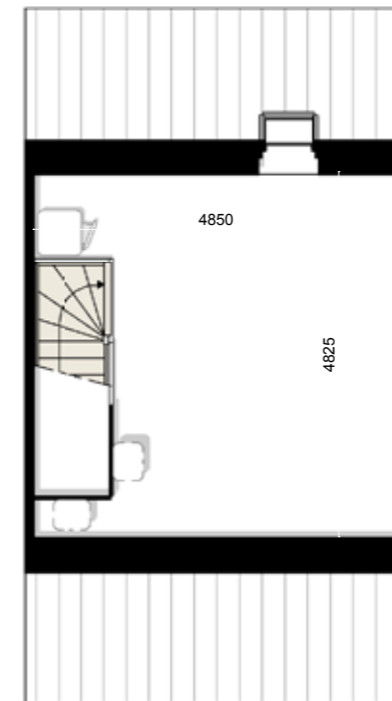
# Plattegronden



begane grond  
basis



1e verdieping  
basis



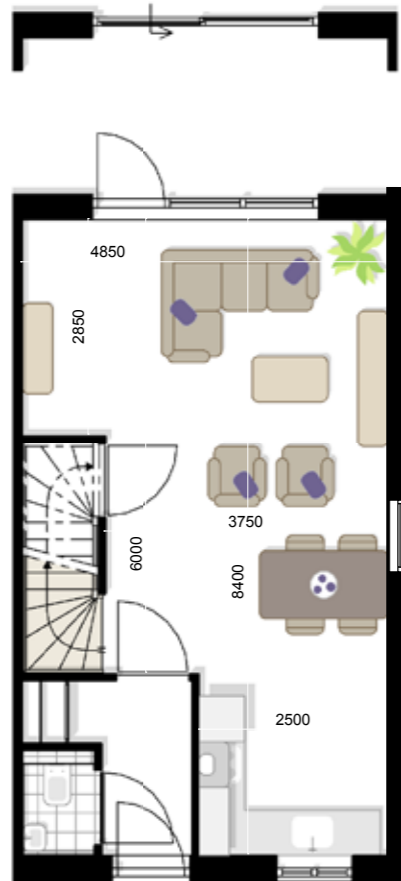
2e verdieping  
basis

Schaal: 1 : 100

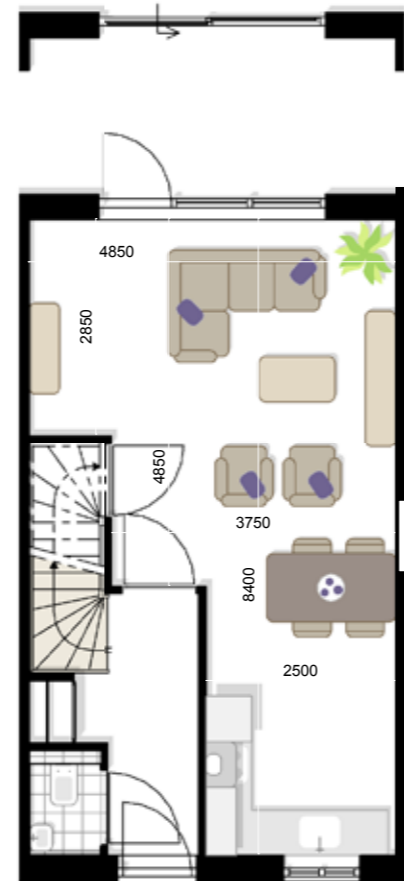
## Plattegronden opties

### Optie prijzen:

- |   |           |
|---|-----------|
| 1. achtergevel schuifpu                     | € 2090,-  |
| 2. bgg trapopgang in woonkamer met trapkast | € 860,-   |
| 3. bgg trapopgang in hal met trapkast       | € 1160,-  |
| 4. uitbouw 1200mm                           | € 7500,-  |
| 5. uitbouw 2400mm                           | € 10650,- |
| 6. dakraam 780x980mm                        | € 980,-   |
| 7. dakraam 1400x780mm                       | € 1030,-  |
| 8. dakkapel 2100mm breed                    | € 7605,-  |



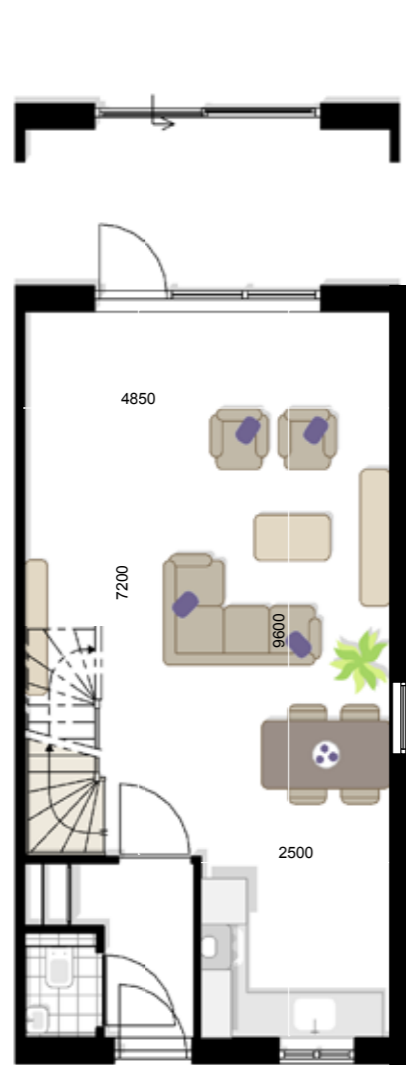
begane grond  
indelingsoptie 1



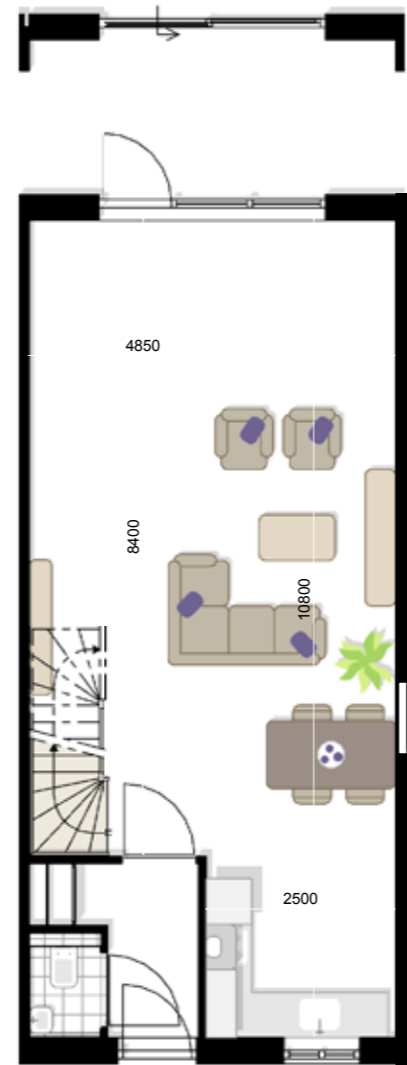
begane grond  
indelingsoptie 2

Schaal: 1 : 100

# Plattegronden opties



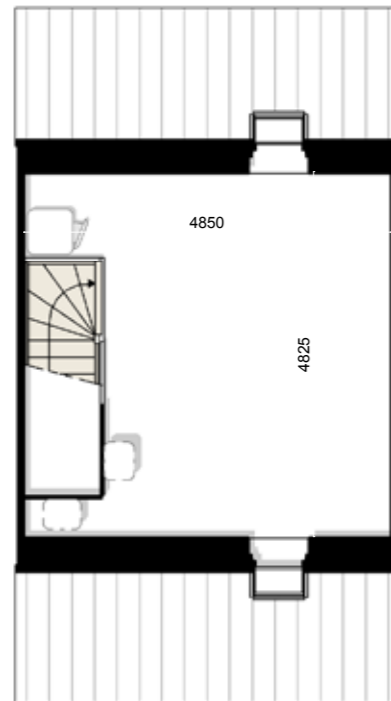
begane grond  
uitbreidingsoptie 1  
(achteruitbouw 1,2 m)



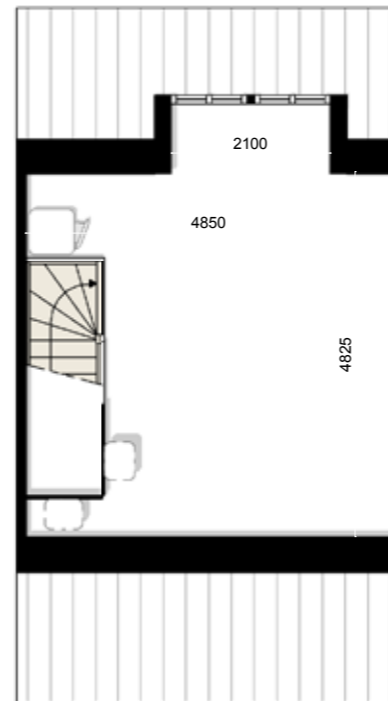
begane grond  
uitbreidingsoptie 2  
(achteruitbouw 2.4 m)

Schaal: 1 : 100

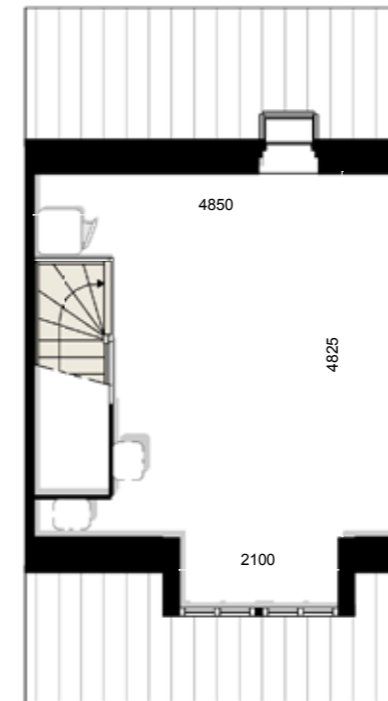
# Plattegronden opties



2e verdieping  
uitbreidingsoptie 4  
(dakraam voorzijde)



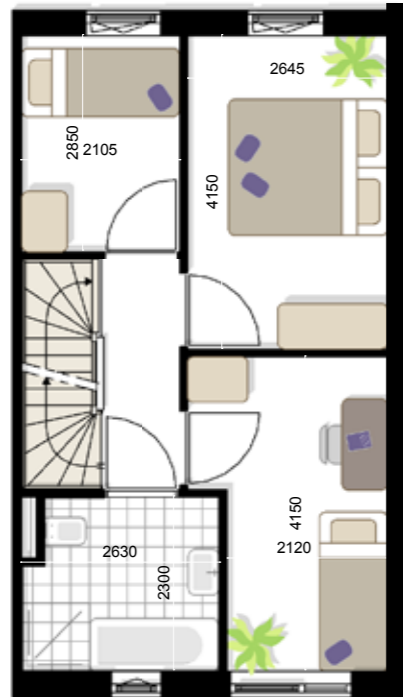
2e verdieping  
uitbreidingsoptie 5  
(dakkapel)



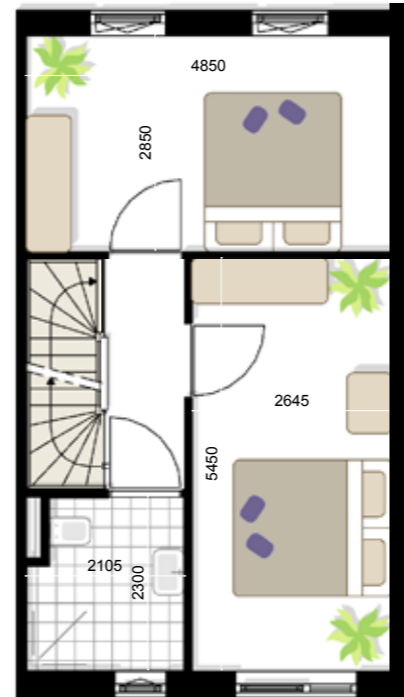
2e verdieping  
uitbreidingsoptie 6  
(dakkapel voorzijde)

Schaal: 1 : 100

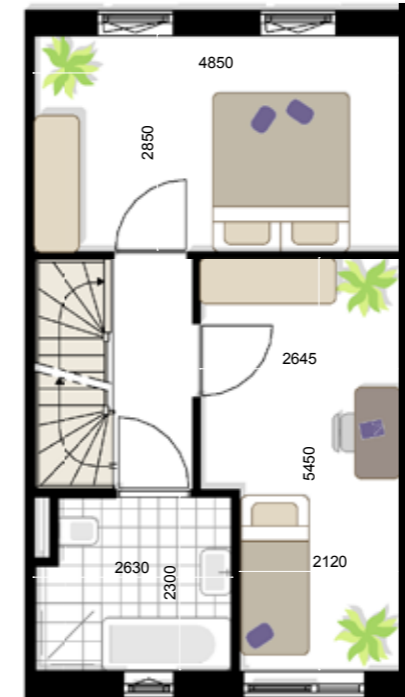
# Plattegronden opties



1e verdieping  
indelingsoptie 3



1e verdieping  
indelingsoptie 4



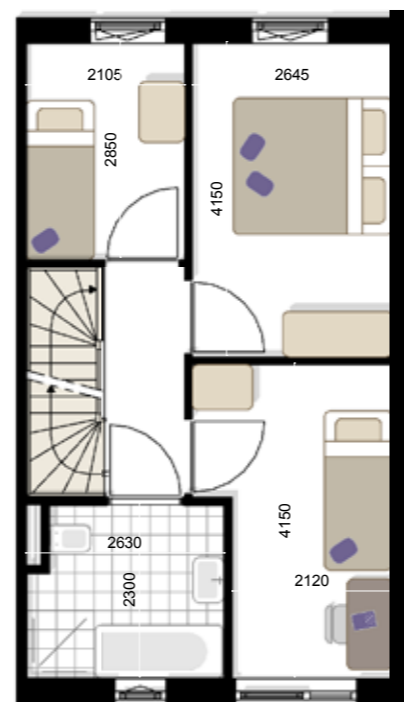
1e verdieping  
indelingsoptie 5

Schaal: 1 : 100

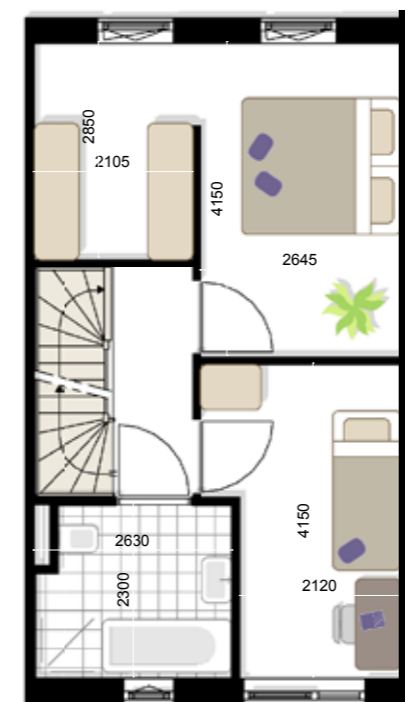
# Plattegronden opties



1e verdieping  
indelingsoptie 6



1e verdieping  
indelingsoptie 7



1e verdieping  
indelingsoptie 8

Schaal: 1 : 100